



501 Granada White



504 French Gray



505 Iceberg Green



506 Almond



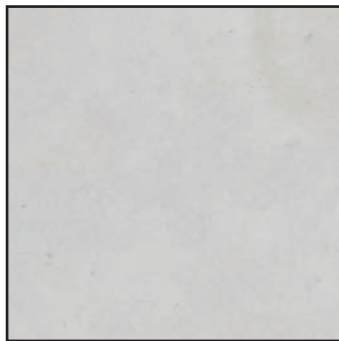
507 Cafe Brown



510 Caramel



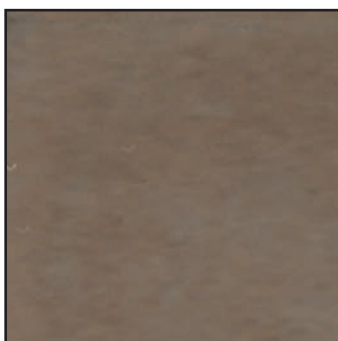
512 Agave Green



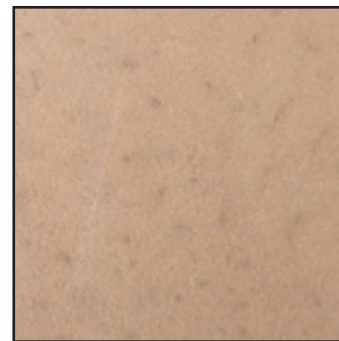
513 Porcelain



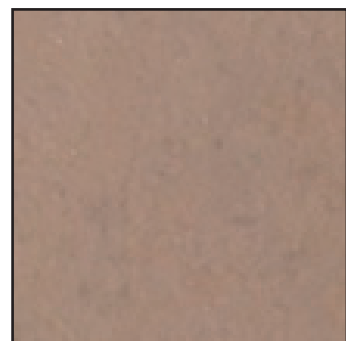
516 Brick Red



521 Kona



524 Pebble



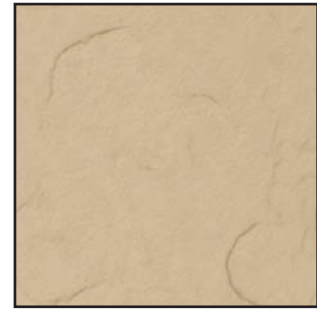
525 Adobe



1501 GRANADA WHITE



1504 FRENCH GRAY



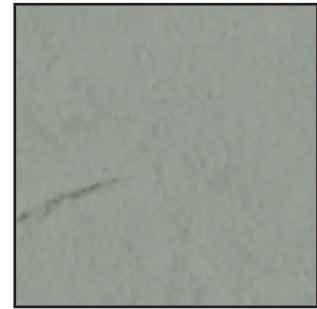
1506 ALMOND



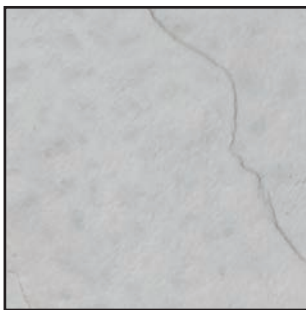
1507 CAFE BROWN



1510 CARAMEL



1512 AGAVE GREEN



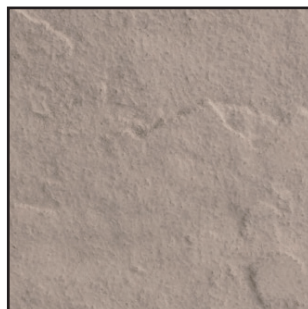
1513 PORCELAIN



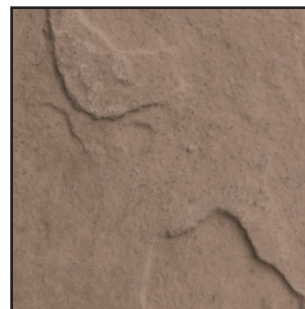
1516 BRICK RED



1521 KONA



1524 PEBBLE



1525 ADOBE

PLEASE NOTE: ALL OF OUR PRODUCTS ARE MADE BY HAND FROM NATURAL MATERIALS. VARIATIONS IN COLOR ARE TO BE EXPECTED. TO CONFIRM COLOR, PLEASE REFER TO ACTUAL CONCRETE SAMPLES BEFORE PLACING ORDER. SHIPPING MAY RESULT IN MINOR CHIPPING. THIS IS NOT DETRIMENTAL TO APPEARANCE OR FUNCTION. STEPSTONE, INC. RECOMMENDS SEALING TO AID IN GROUT REMOVAL AND CLEANING PRIOR TO INSTALLATION. GROUT NATURALLY WILL BOND WITH CONCRETE. IMMEDIATELY REMOVE ANY GROUT SLURRY THAT COMES IN CONTACT WITH THE FINISHED FACE OF THE PRECAST CONCRETE PIECES. ALL SIZES ARE NOMINAL. SEE DETAILS FOR FURTHER INFORMATION. AVAILABLE IN OTHER STANDARD COLORS. **SEE ACTUAL COLOR CONCRETE SAMPLES BEFORE ORDERING.** THIS MATERIAL IS COPYRIGHTED AND IS INTENDED SOLELY FOR THE USE OF CUSTOMERS OF STEPSTONE, INC.